

ALSTON BAR & BEEF

SET MENU

MONDAY-THURSDAY 12PM-6PM, FRIDAY & SATURDAY 12PM-4PM

2 COURSES FOR £15 / 3 COURSES FOR £18

STARTERS

CHICKEN LIVER PARFAIT

PLUM JELLY, TOASTED SOURDOUGH

WATERMELON & CUCUMBER SALAD

WHIPPED FETA, STRAWBERRY & MINT DRIZZLE

SMOKED SALMON

GRAPEFRUIT, FENNEL & APPLE SALAD, WASABI VINAIGRETTE

MAINS

ALSTON STEAK CIABATTA

RIB EYE STEAK, BEEF DRIPPING ONIONS,
MUSTARD MAYO, SKINNY CHIPS

SQUASH "SPAGHETTI" (V+)

ROASTED ARTICHOKE, CAPER & LEMON SAUCE,
DRIED SAGE, VEGAN PARMESAN, PUMPKIN SEEDS

PAN FRIED BREAM

WILTED SPINACH, EGG YOLK MASH, FISH VELOUTÉ

STEAK

TWEED VALLEY 230G FLAT IRON

CHIPS, GARLIC BUTTER

TWEED VALLEY 250G RUMP STEAK

CHIPS, GARLIC BUTTER

(£3 SUPPLEMENT)

DESSERTS

MIXED BERRIES CRUMBLE TART

STRAWBERRY ICE CREAM

CHOCOLATE MOUSSE (V+)

BLACKBERRY GEL

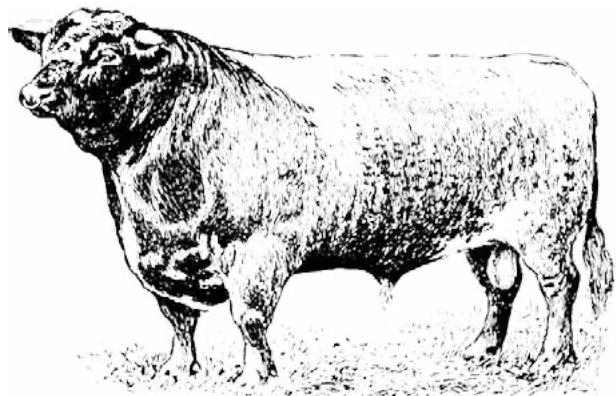
LIME POSSET

WATERMELON SALSA

3 COURSES & AN ALSTON GIN FOR £18

ANY ALSTON GIN IS INCLUDED
WHEN ORDERING 3 COURSES
FROM OUR SET MENU

*AVAILABLE UNTIL 1ST SEPTEMBER



PLAN
of the City of
GLASGOW.
1783.

ALSTON BAR & BEEF



THE ORIGINAL ALSTON BAR & BEEF IN GLASGOW IS LOCATED NEAR WHERE ALSTON STREET ONCE WAS - A BUSTLING THOROUGHFARE IN GLASGOW THAT WAS DEMOLISHED IN THE MID-1870S TO MAKE WAY FOR CENTRAL STATION. THE STREET RAN NORTH TO SOUTH THROUGH GRAHAMSTON, AN IMPORTANT LOCATION FOR GLASGOW'S GROWING INTERNATIONAL TRADE, PROVIDING PREMISES FOR PROCESSING AND STORING GOODS FOR DESPATCH TO COUNTRIES AROUND THE WORLD.

LIKE GLASGOW, MANCHESTER HAS A STRONG INDUSTRIAL HERITAGE AND THERE ARE MANY SIMILARITIES BETWEEN THE CITIES WHICH MAKE IT THE IDEAL LOCATION FOR THE FIRST ALSTON BAR & BEEF IN ENGLAND. THE HISTORIC CORN EXCHANGE WAS ORIGINALLY CONSTRUCTED ON THIS SITE IN 1837, THE AREA WAS KNOWN AS THE CORN AND PRODUCE EXCHANGE AND WAS A PLACE WHERE FARMERS AND MERCHANTS TRADED CEREAL GRAINS.



ALSTONMANCHESTER.CO.UK

CATHEDRAL ST | THE CORN EXCHANGE | MANCHESTER, M4 3TR
0161 804 5555 | INFO@ALSTONMANCHESTER.CO.UK